

NOTES:

1. THERE ARE TWO POSSIBLE LOCATIONS TO MOUNT THE PHOTOCELL.
 - A. THE 1ST LOCATION IS LOCATED NEAR THE PIR TO ALLOW THE PHOTO CELL TO USE THE FRESNEL LENS AS THE LIGHT SOURCE. A DARK FRESNEL LENS MAY NOT ALLOW SUFFICIENT LIGHT TO PASS THROUGH CAUSING IMPROPER DAY/NIGHT FUNCTIONALITY.
 - B. THE ALTERNATE LOCATION IS INTENDED TO BE USED VIA A SEPARATE HOLE IN THE ENCLOSURE FOR THE LIGHT SOURCE.
2. THE PHOTO CELL SHOULD BE MOUNTED ON THE SAME SIDE AS THE PIR.
3. FOR OPTION 1, SOLDER THE PHOTO CELL ON THE COPPER TRACE SIDE OF THE CIRCUIT BOARD. FOR OPTION 2, SOLDER THE PHOTO CELL ON THE SAME SIDE AS THE OTHER COMPONENTS.
3. TRIM OFF THE EXCESS WIRE (IF ANY) PROTRUDING FROM THE OTHER SIDE OF THE CIRCUIT BOARD.

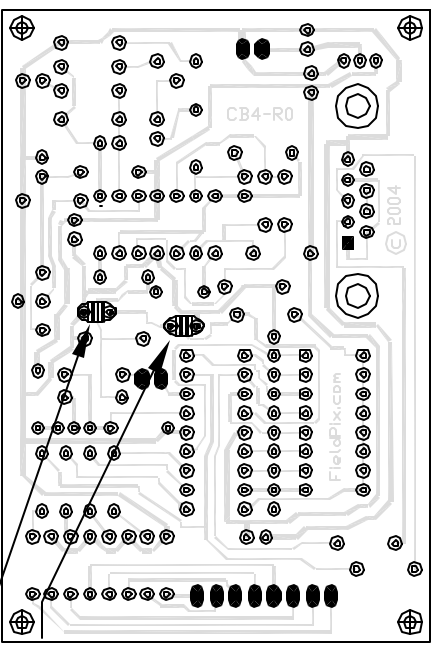


PHOTO CELL LOCATIONS

FieldPix			
<i>Game Camera Systems</i>			
SIZE	FSCM NO.	DWG NO.	REV
		CB-4 PHOTO CELL MOUNTING	0
SCALE NONE	07/03/04	SHEET	