

PHOTO CELL

OPTION 1. PHOTO CELL ON COPPER TRACE SIDE

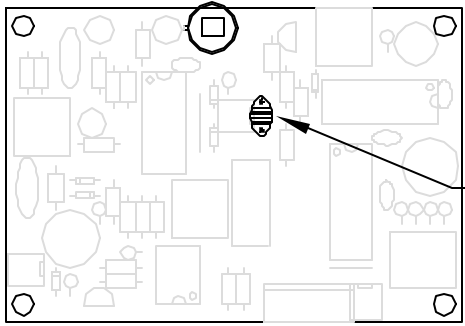


PHOTO CELL

OPTION 2. PHOTO CELL SAME SIDE AS COMPONENTS

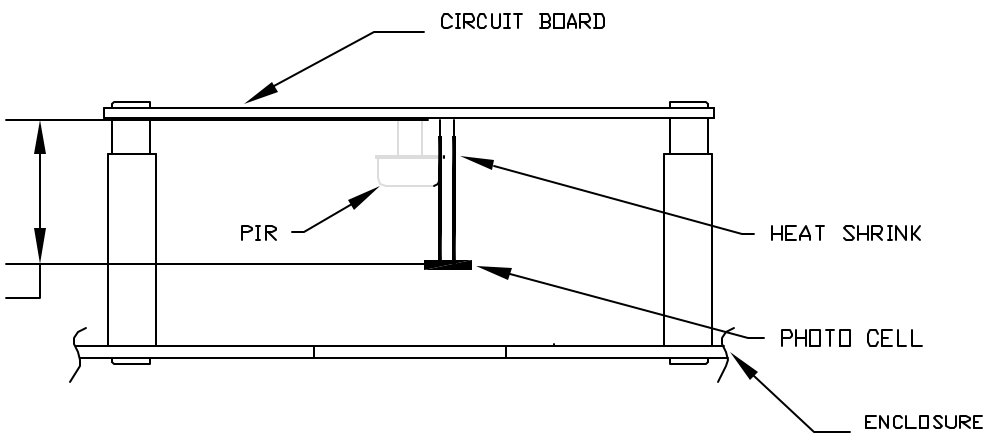


PHOTO CELL MOUNTING - OPTION 1

NOTES:

1. THE PHOTO CELL SHOULD BE MOUNTED ON THE SAME SIDE AS THE PIR.
2. FOR OPTION 1, SOLDER THE PHOTO CELL ON THE COPPER TRACE SIDE OF THE CIRCUIT BOARD. FOR OPTION 2, SOLDER THE PHOTO CELL ON THE SAME SIDE AS THE OTHER COMPONENTS.
3. AFTER SOLDERING, IT IS RECOMMENDED TO USE NON-CONDUCTING HOT GLUE BETWEEN THE PHOTO CELL AND CIRCUIT BOARD TO HELP SUPPORT THE PHOTO CELL.
4. TRIM OFF THE EXCESS WIRE PROTRUDING FROM THE OTHER SIDE OF THE CIRCUIT BOARD.
5. MOUNT THE PHOTO CELL SO IT IS POINTING TOWARDS THE FRESNEL LENS. BE CAREFUL NOT TO BLOCK THE PIR'S FIELD OF VIEW.

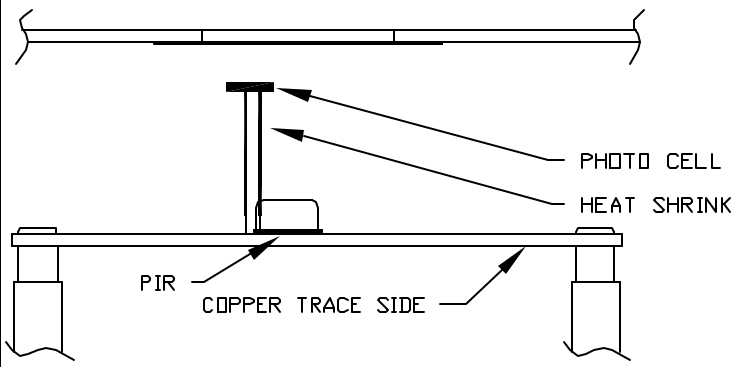


PHOTO CELL MOUNTING - OPTION 2

FieldPix <i>Game Camera Systems</i>			
SIZE	FSCM NO.	DWG NO.	REV
		CB-3 PHOTO CELL MOUNTING	0
SCALE NONE	08/03/02	SHEET	